

# STIRLING®

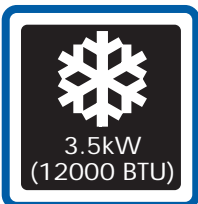
## PORTABLE AIR CONDITIONER

3 Years Warranty

3.5kW (12000BTU) Cooling Power



### Features:



**3.5kW (12000 BTU)  
Cooling Power**  
Cools areas up to 28m<sup>2</sup>  
fast and efficiently



**Dehumidifying**  
Reduces the humidity in the  
room while cooling.



**24 Hour Timer**  
For automatic start  
or switch-off



**Cools rooms to 28m<sup>2</sup>**  
Suitable for bedrooms, lounge  
or family rooms and small offices

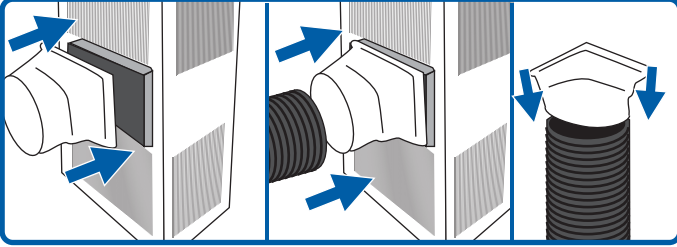
# Quick Start Guide

Read the full instruction manual thoroughly before use. It contains comprehensive installation and usage instructions and important safety advice. This Quick Start Guide only contains brief set-up instructions.

## Window Installation

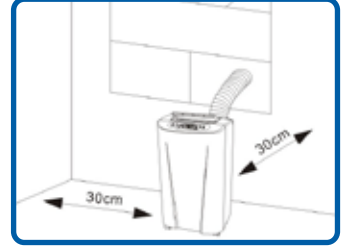
The air exhaust hose **MUST BE CONNECTED** and hot air expelled to the outside for the appliance to work properly. Keep the hose as short as possible.

Your window kit has been designed to fit most standard 'horizontal' and 'vertical' window applications, but for certain types of windows it may be necessary for you to improvise/modify some aspects of the installation procedure.



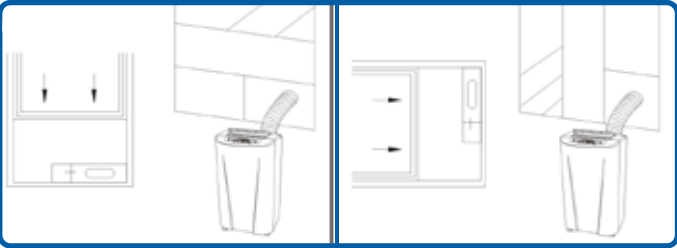
### Step 1

Fit the hose connectors to the exhaust outlet grille and onto one end of the flexible hose and twist into place.



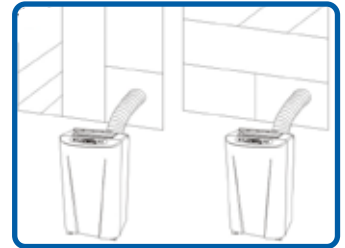
### Step 2

Keep a 30cm space when positioning the appliance.



### Step 3

Adjust the window slider to the length of a horizontally or to the height of a vertically opening window.



### Step 4

Fit the connector through the opening to the outside.

Model Number	A006C-12C
Colour	White
Cooling Power	3.5kW (12000 BTU)
Cooling Area	18-28m <sup>2</sup>
Warranty	3 Years
Version	QSGV2.0

