

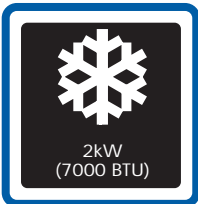
STIRLING[®]

PORTABLE AIR CONDITIONER

2kW (7000BTU) Cooling Power



Features:



2kW
(7000 BTU)

2kW (7000 BTU) Cooling Power

Cools areas up to 16m²
fast and efficiently



REMOVABLE
AIR FILTERS

Two Air Filters

Back and side air filters for
clean air output



24 HOUR
TIMER

24 Hour Timer

For automatic start
or switch-off



16m²

COOLS ROOMS

Cools Rooms to 16m²

Suitable for bedrooms, lounge
or family rooms and small offices

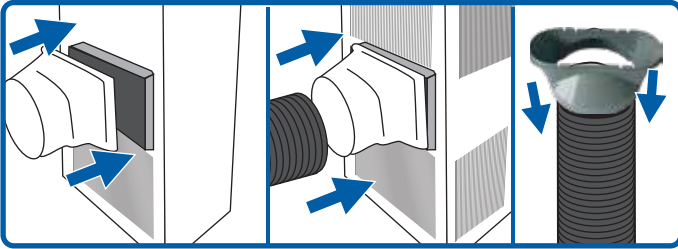
Quick Start Guide

Read the full instruction manual thoroughly before use. It contains comprehensive installation and usage instructions and important safety advice. This Quick Start Guide only contains brief set-up instructions.

Window Installation

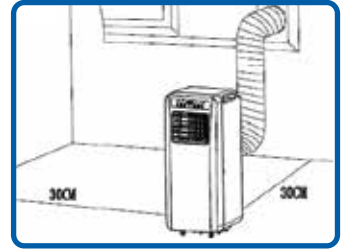
The air exhaust hose **MUST BE CONNECTED** and hot air expelled to the outside for the appliance to work properly. Keep the hose as short as possible.

Your window kit has been designed to fit most standard 'horizontal' and 'vertical' window applications, but for certain types of windows it may be necessary for you to improvise/modify some aspects of the installation procedure.



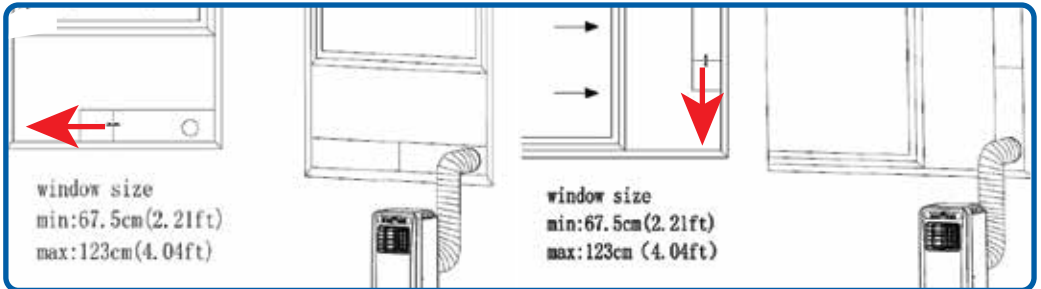
Step 1

Fit the hose connectors to the exhaust outlet grille and onto one end of the flexible hose and twist into place.



Step 2

Keep a 30cm space when positioning the appliance.



Step 3

Adjust the window slider to the length of a horizontally or to the height of a vertically opening window and fit the connector through the opening to the outside.

Model Number	A007A-07C
Colour	White
Cooling Power	2kW (7000 BTU)
Cooling Area	10-16m ²
Warranty	3 Years
Version	QSGV2.0

For more information
please visit www.stirlingappliances.com.au
or call 1300 886 649

