

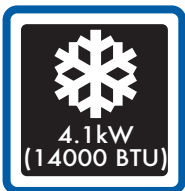
STIRLING®

PORTABLE AIR CONDITIONER

4.1kW (14000BTU) Cooling Power



Features:



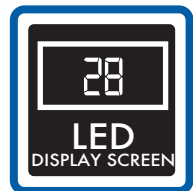
**4.1kW (14000 BTU)
Cooling Power**
Cools areas up to 30m²
fast and efficiently.



2 Speed Settings
High or low airflow for
optimum cooling effect.



4 Air Filters
Back and side air filters
for clean air output.



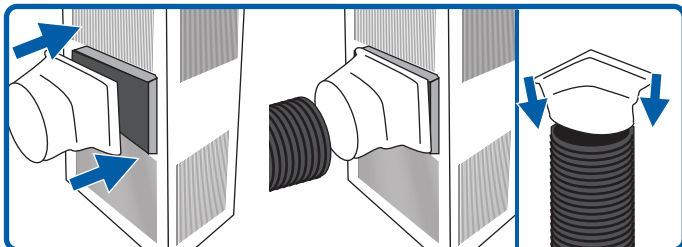
LED Display Screen
Control panel with easy
to read LED display screen.

Quick Start Guide

Read the full instruction manual thoroughly before use. It contains comprehensive installation and usage instructions and important safety advice. This Quick Start Guide only contains brief set-up instructions.

Window Installation

Your window kit has been designed to fit most standard 'horizontal' and 'vertical' window applications, but for certain types of windows it may be necessary for you to improvise/modify some aspects of the installation procedure.



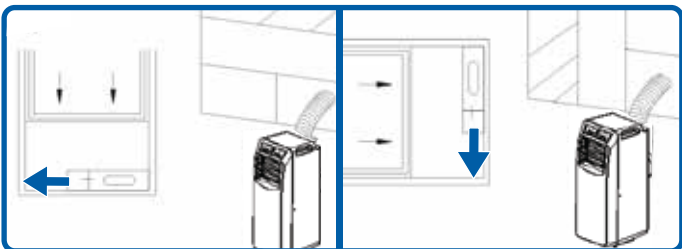
Step 1

Fit the hose connectors to the exhaust outlet grille and onto one end of the flexible hose and twist into place.



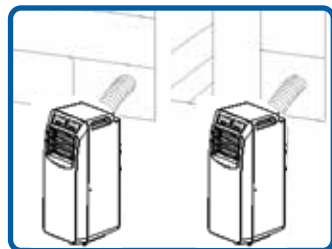
Step 2

Keep a 30cm space when positioning the appliance.



Step 3

Adjust the window slider to the length of a horizontally or to the height of a vertically opening window.



Step 4

Fit the connector through the opening to the outside.

Model Number	A008A-14C
Colour	Black
Cooling Power	4.1kW (14000 BTU)
Cooling Area	Approx 22-30m ²
Warranty	3 Year
Version	QSGV4.0



For more information
please visit www.stirlingappliances.com.au
or call 1300 886 649