

# STIRLING<sup>®</sup>

## 9.5kg Top Load Washing Machine



### Features:



Large capacity is ideal for families and less loads of laundry



700RPM spin speed removes more water & reduces the drying time



6 wash programs to ensure your clothing is washed appropriately

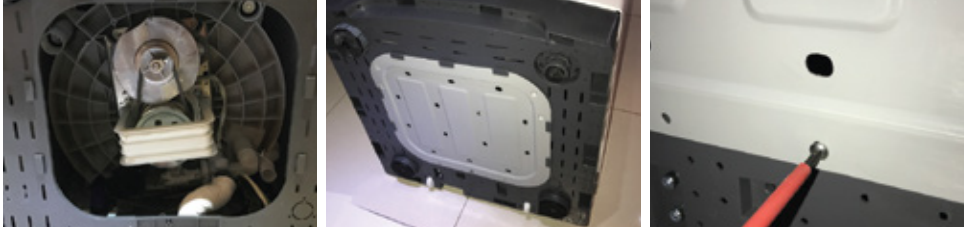


Delay start feature helps plan your washing around your day

# Quick Start Guide

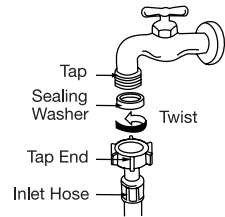
## Installing the base cover (refer to user manual, page 10)

- Make sure the power cord is unplugged from the mains supply.
- Place some padding (such as a soft mat, blanket or thick towel) on the floor and gently lay the washine machine on the padding, back side down. Take care not to dent the housing
- Insert the base cover into the grooves on the underside of the washing machine as per the following images.



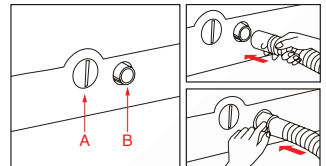
## Connecting the Water Inlet Hoses (refer to user manual, page 11)

- Install the water inlet hoses to your hot and cold water taps, following the instructions below.
- Check and ensure that the sealing washers are firmly in place.
- Attach the straight end of the hose to your water taps. Make sure to attach the hot water supply hose (with red markings) to the hot water tap and the cold water supply hose (with blue markings) to the cold water tap.
- Tighten the coupling nuts securely by hand, as illustrated on the right.

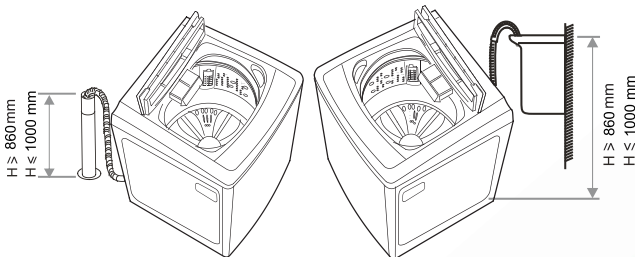


## Installing the Drain Hose (refer to user manual, page 11)

- The drain hose and drain pump filter are located at the back of the machine, down near the base.
- Pinching the two bands of the clamp on the drain hose, connect it to the drain hose connection at the back of the washer, as illustrated below.
- When the washer is in use, put the drain hose into a drain spout (or into a sink/tub) as illustrated below.



A. Drain pump with lint filter  
B. Drain hose connection



Model Number	STL95
Finish	Stainless Steel
Warranty	3 years

For more information please call 1300 11 43 57  
or visit [www.stirlingappliances.com.au](http://www.stirlingappliances.com.au)

