

STIRLING®

6.5kg TOP LOAD WASHING MACHINE



Features:



DELAY
START TIMER

Delay Start Timer

24 Hour delay start timer to program the finish time of your wash.



LOAD SENSOR

Load Sensor

The machine automatically detects the weight of your wash load and selects the appropriate water level, wash and spin time and rinse type; for the QUICK program, the machine automatically chooses the water level.



MULTIPLE WASH
PROGRAMS

Multiple Wash Programs

Choose from 'Normal', 'Cotton', 'Heavy Duty', 'Blanket', 'Quick' and 'Delicate' programs, or customise a program to your needs.



ELECTRONIC
CONTROL

Electronic Control Panel

Easy-to-use electronic control panel with LED display.

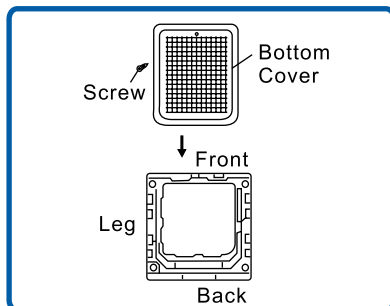
Quick Set-Up: Installation

Before installing your washing machine, read all safety instructions in the supplied manual, especially the sections on electrical safety and installation.

Installing the bottom cover

Make sure the power cord is unplugged from the mains supply. Place some padding (such as a soft mat, blanket or thick towel) on the floor and gently lay the washing machine on the soft padding, back side down. Insert the bottom cover into the hooks of the leg, pushing it straight until it reaches into the front hooks. Fasten the bottom cover with the supplied screw. Carefully set the washer upright.

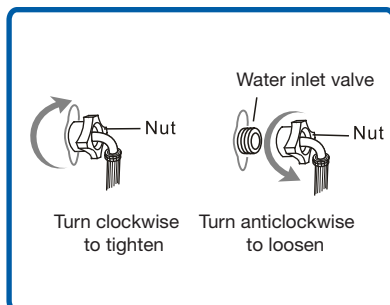
For detailed instructions see page 10 in the instruction manual.



Connecting the water inlet hoses

Install the water inlet hoses to your hot and cold water taps, ensuring that the sealing washers are firmly in place. Attach the straight end of the hose to your water taps and the curved end of the hose to the corresponding inlet valve of the washing machine. Make sure to attach the hot water supply hose (with red markings) to the hot water tap and the cold water supply hose (with blue markings) to the cold water tap. Tighten the coupling nuts securely by hand.

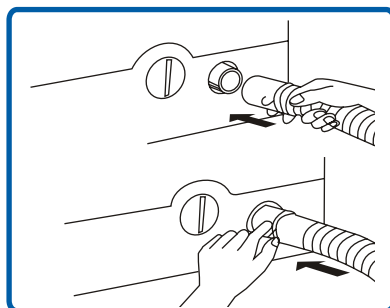
For detailed instructions see page 11 in the instruction manual.



Installing the drain hose

Pinching the two bands of the clamp on the drain hose, connect it to the drain pump at the back of the washer. Pull the drain hose upward and affix it to the hose clip at the back of the washer. During use, put the drain hose into a drain spout (or into a sink/tub) so the water can drain freely. Do not immerse the end of the drain hose in water.

For detailed instructions see pages 12-13 in the instruction manual.



Model Number XQB75-570

Colour White

Capacity 6.5kg

Warranty 3 Years In Home

Version QSG-V3.1



For more information please visit www.stirlingappliances.com.au or call 1300 886 649